

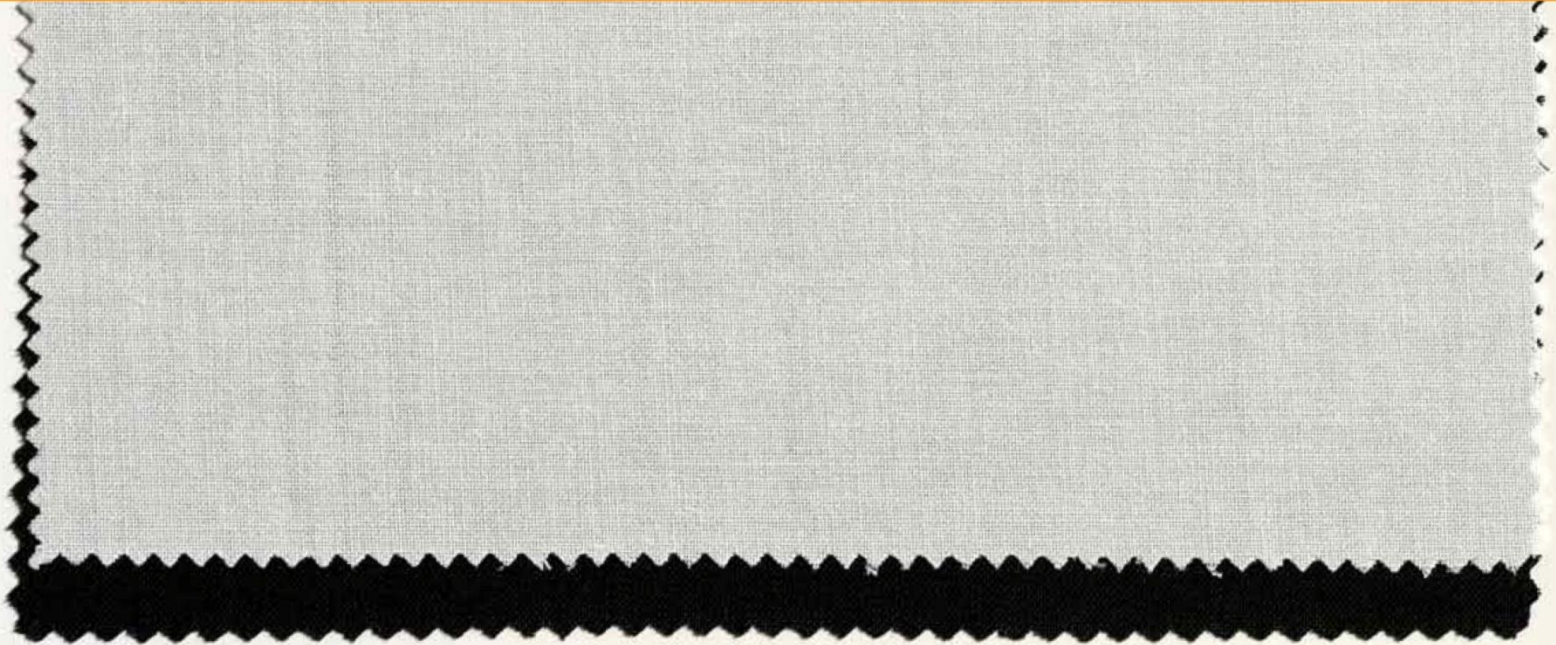
Cotswold is a leading multinational manufacturer and supplier of textile and apparel products to leading global fashion and garment brands.

Our pocketing series offers a range of solutions from 100% Cotton mercerized, through a wide variation of TC to 100% Polyester, plain, twill & herringbone, which can be used for dress pants, heavy washed garments and uniforms.

Use of our pocketing along with our extensive range of waistbands also provides an added value for every collection.



Cancun



Woven pocketing fabric for men's and ladies wear



It is recommended to carry out fabric package testing prior to production

Fabric Specifications

Color	Black, SB, Other Colors
Weight (g/sqm)	152 (+/- 5)
(oz/sqy)	4.48
Roll width	57" - 58"
Roll length	150 yards
Fabric composition	65% Polyester, 35% Cotton

Construction Specifications

Construction	60x60
Yarn count	20x20
Weave	Plain

Washing Conditions



Do Not Wash With Chlorine Bleach

Charleston



Woven pocketing fabric for men's and ladies wear



It is recommended to carry out fabric package testing prior to production

Fabric Specifications

Color	Natural , Black
Weight (g/sqm)	112 (+ - 5)
(oz/sqy)	3.3
Roll width	57'' - 58''
Roll length	150 yards
Fabric composition	70% Polyester, 30% Cotton

Construction Specifications

Construction	76 X 54
Yarn count	26 X 150D
Weave	Plain

Washing Conditions



Do Not Wash With Chlorine Bleach

Chelsea



Woven pocketing fabric for men's and ladies wear



It is recommended to carry out fabric package testing prior to production

Fabric Specifications

Color	Ivory, Black, Other Colors
Weight (g/sqm)	113 (+/- 5)
(oz/sqy)	3.36
Roll width	57" - 58"
Roll length	150 yards
Fabric composition	70% Polyester, 30% Cotton

Construction Specifications

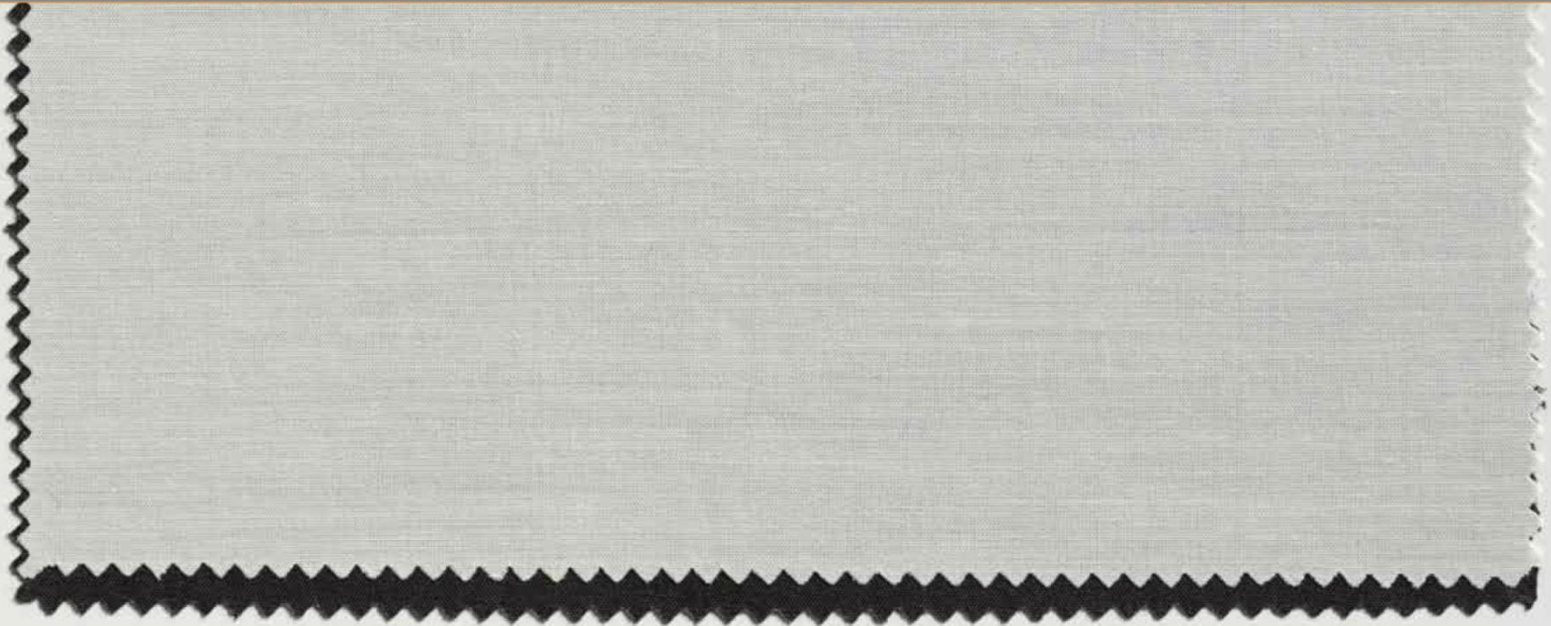
Construction	82x64
Yarn count	35 x 150D
Weave	Herringbone

Washing Conditions



Do Not Wash With Chlorine Bleach

Deville



Woven pocketing fabric for men's and ladies wear



It is recommended to carry out fabric package testing prior to production

Fabric Specifications

Color	White , Black
Weight (g/sqm)	92 (+/- 5)
(oz/sqy)	2.72
Roll width	57'' - 58''
Roll length	150 yards
Fabric composition	90% Polyester,10% Cotton

Construction Specifications

Construction	110x76
Yarn count	100Dx45S
Weave	Plain

Washing Conditions



Do Not Wash With Chlorine Bleach

Dillon



Woven pocketing fabric for men's and ladies wear



It is recommended to carry out fabric package testing prior to production

Fabric Specifications

Color	Light Blue
Weight (g/sqm)	129 (+/- 5)
(oz/sqy)	3.81
Roll width	57" - 58"
Roll length yards	Variable
Composition	100% Mercerized Cotton

Construction Specifications

Construction	160x70
Yarn count	40x40
Weave	Chambray

Washing Conditions



Do Not Wash With Chlorine Bleach

Explorer



Woven pocketing fabric for men's and ladies wear



It is recommended to carry out fabric package testing prior to production

Fabric Specifications

Color	Natural
Weight (g/sqm)	255
(oz/sqy)	7.5
Roll width	59" - 60"
Roll length	200 yards
Fabric composition	75% Cotton, 25% Polyester

Construction Specifications

Construction	108 X 56
Yarn count	16 X 12
Weave	3X1Twill

Washing Conditions



Do Not Wash With Chlorine Bleach

Georgia Stretch



Woven pocketing fabric for men's and ladies wear



It is recommended to carry out fabric package testing prior to production

Fabric Specifications

Color	White, Black
Weight (g/sqm)	119
(oz/sqy)	3.5
Roll width	57" - 58"
Roll length	200 yards
Fabric composition	98% Cotton, 2% Spandex

Construction Specifications

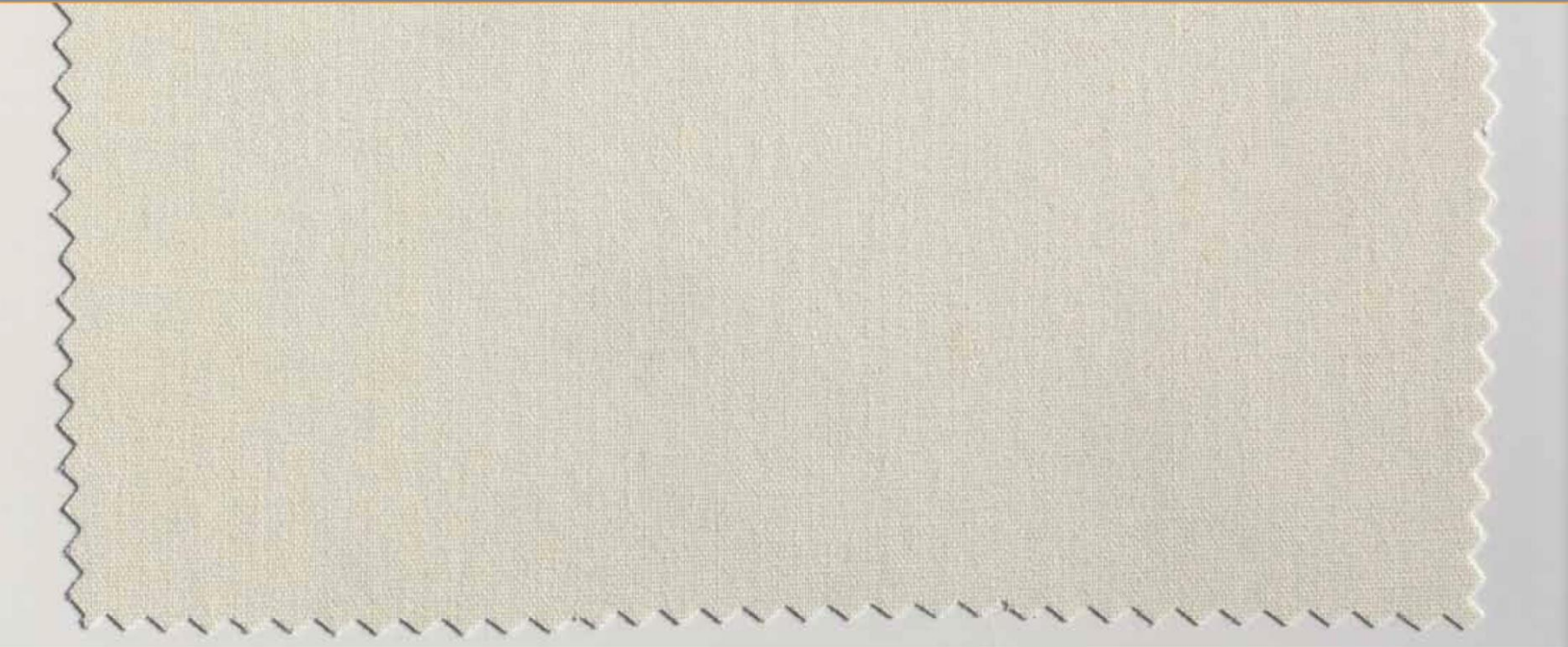
Construction	146 X 60
Yarn count	40 X 40+40D
Weave	Plain

Washing Conditions



Do Not Wash With Chlorine Bleach

Husky



Woven pocketing fabric for men's and ladies wear



It is recommended to carry out fabric package testing prior to production

Fabric Specifications

Color	Natural
Weight (g/sqm)	163 (+-5)
(oz/sqy)	4.8
Roll width	59" - 60"
Roll length	150 yards
Fabric composition	65% Polyester, 35% Cotton

Construction Specifications

Construction	70x50
Yarn count	20x16
Weave	Plain

Washing Conditions



Do Not Wash With Chlorine Bleach

Naksa



Woven pocketing fabric for men's and ladies wear



It is recommended to carry out fabric package testing prior to production

Fabric Specifications

Color	Natural, Black
Weight (g/sqm)	127
(oz/sqy)	3.75
Roll width	59" - 60"
Roll length	200 yards
Fabric composition	50% Polyester, 50% Cotton

Construction Specifications

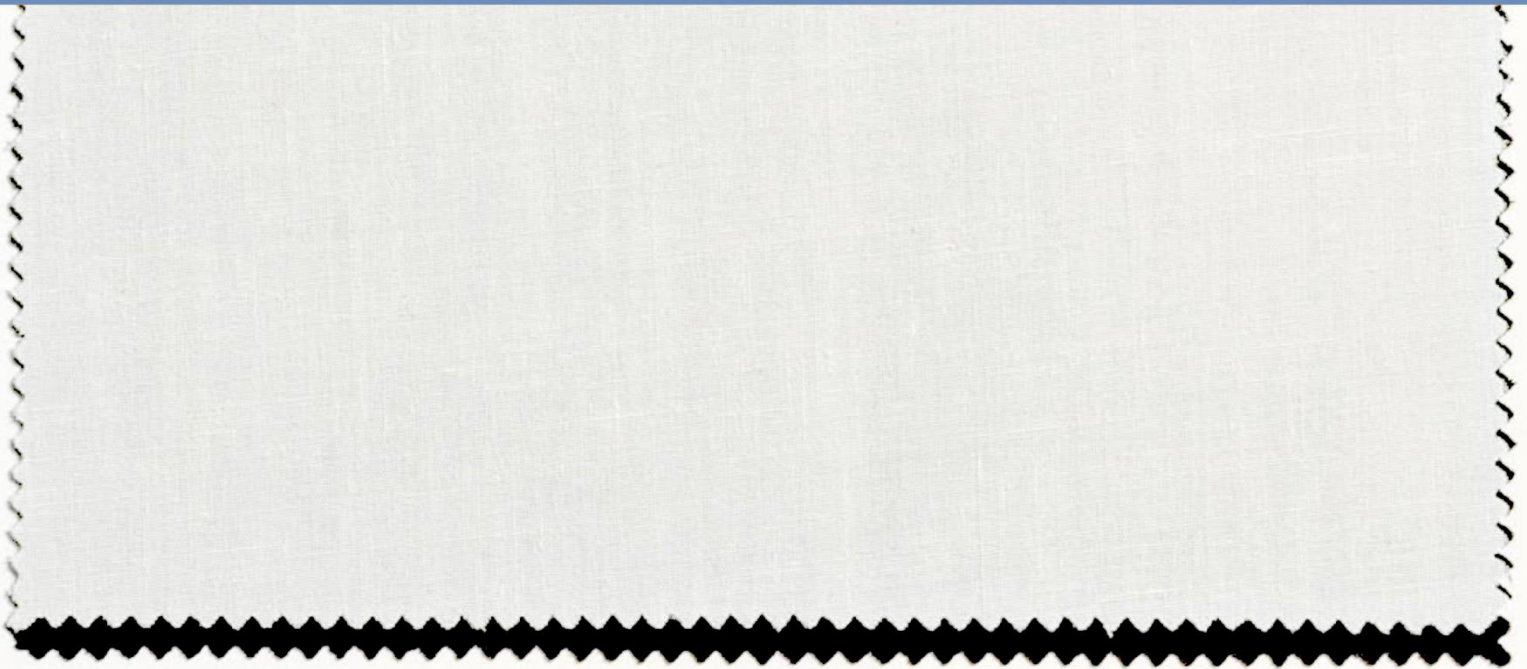
Construction	110 X 66
Yarn count	35 X 35
Weave	Herringbone

Washing Conditions



Do Not Wash With Chlorine Bleach

Phantom



Woven pocketing fabric for men's and ladies wear



It is recommended to carry out fabric package testing prior to production

Fabric Specifications

Color	Natural, White, Black
Weight (g/sqm)	144
(oz/sqy)	4.25
Roll width	43" - 44"
Roll length	200 yards
Fabric composition	70% Polyester, 30% Cotton

Construction Specifications

Construction	76 X 62
Yarn count	30 X 150D
Weave	Twill

Washing Conditions



Do Not Wash With Chlorine Bleach

Seville 82



Woven pocketing fabric for men's and ladies wear



It is recommended to carry out fabric package testing prior to production

Fabric Specifications

Color	White, Ivory, Black
Weight (g/sqm)	95 (+ - 5)
(oz/sqy)	2.8
Roll width	57" - 58"
Roll length	150 yards
Fabric composition	80% Polyester, 20% Cotton

Construction Specifications

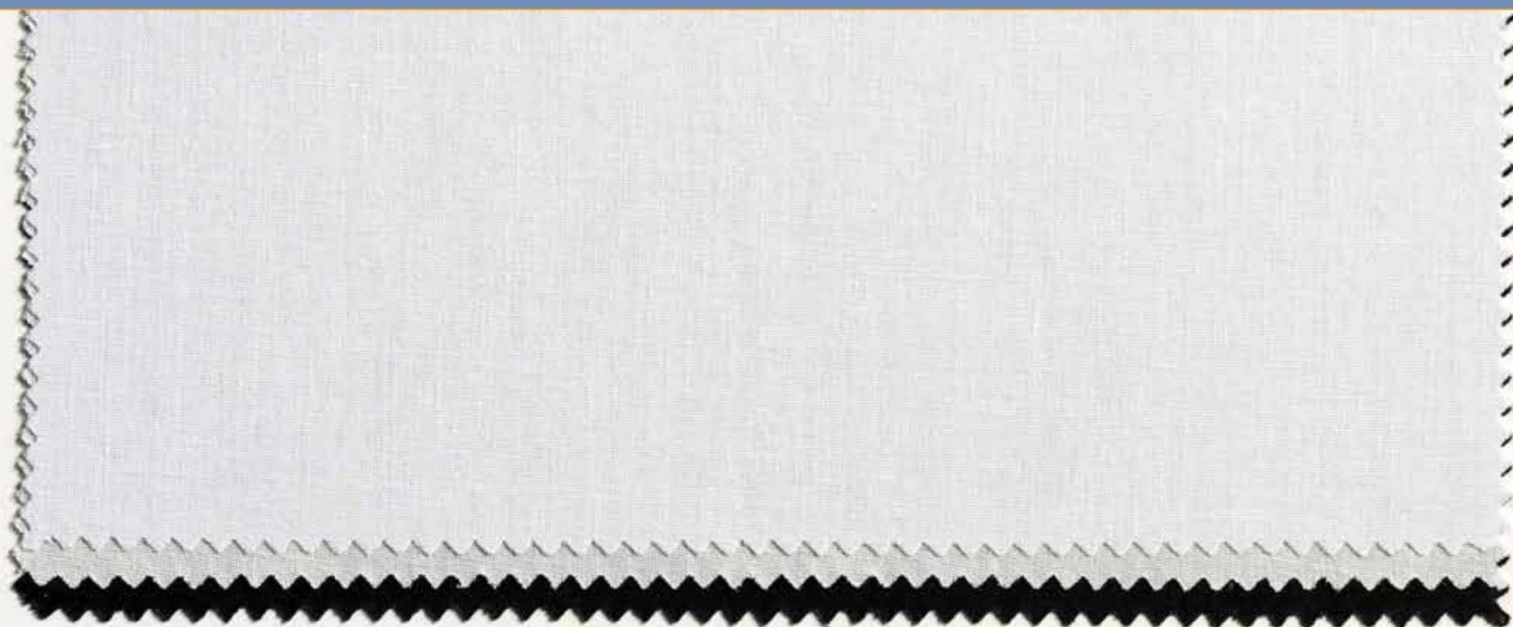
Construction	110x76
Yarn count	45x45
Weave	Plain

Washing Conditions



Do Not Wash With Chlorine Bleach

Seville



Woven pocketing fabric for men's and ladies wear



It is recommended to carry out fabric package testing prior to production

Fabric Specifications

Color	White, Black
Weight (g/sqm)	98 (+ - 5)
(oz/sqy)	2.9
Roll width	57" - 58"
Roll length	150 yards
Fabric composition	65% Polyester, 35% Cotton

Construction Specifications

Construction	110x76
Yarn count	45x45
Weave	Plain

Washing Conditions



Do Not Wash With Chlorine Bleach

Sierra

Woven pocketing fabric for men's and ladies wear



It is recommended to carry out fabric package testing prior to production

Fabric Specifications

Color	White, Ivory , Black
Weight (g/sqm)	99 (+-5)
(oz/sqy)	2.88
Roll width	57" - 58"
Roll length	150 yards
Fabric composition	70% Polyester, 30% Cotton

Construction Specifications

Construction	76X58
Yarn count	36x150D
Weave	Plain

Washing Conditions



Do Not Wash With Chlorine Bleach

Tuffy



Woven pocketing fabric for men's and ladies wear



It is recommended to carry out fabric package testing prior to production

Fabric Specifications

Colors	Natural , Black, Other Colors
Weight (g/sqm)	142 (+ 5)
(oz/sqy)	4.2
Roll width	59" - 60"
Roll length	150 yards
Fabric composition	65% Polyester, 35% Cotton

Construction Specifications

Construction	72 X 56
Yarn count	23x23
Weave	Twill

Washing Conditions



Do Not Wash With Chlorine Bleach

Utah



Woven pocketing fabric for men's and ladies wear



It is recommended to carry out fabric package testing prior to production

Fabric Specifications

Color	Natural
Weight (g/sqm)	206 (+-5)
(oz/sqy)	6.08
Roll width	57" - 58"
Roll length	150 yards
Fabric composition	65% Polyester, 35% Cotton

Construction Specifications

Construction	108X56
Yarn count	20x20
Weave	Twill

Washing Conditions



Do Not Wash With Chlorine Bleach

Founded in 1954 and now in its third generation of family management, Cotswold is a leader in the development and distribution of technical textiles and apparel fabrics. As a vertically integrated manufacturer, converter and distributor, Cotswold brings its customers quality and value from fiber to a finished product.

New York, NY:

(Corporate Headquarters)
Cotswold Industries Inc.
10 East 40th Street, Suite 3410
New York, NY 10016
P: 212-689-3432
F: 212-545-0603

info@cotswoldindustries.com

Charlotte, NC:

Cotswold Industries Inc.
1309 Rockfish Drive
Matthews, NC 28105
P: 212-689-3432
F: 212-545-0603

bill@cotswold.com.hk

Cotswold Asia:

Room 505-506, Building 3
#58East Xinjian Road,
Minhang district
Shanghai, China 201199
P: +86-21-34976915

info@cotswoldasia.com



Pocketing

www.cotswoldapparel.com